

## The effect of *TOMM40* poly-T length on gray matter volume and cognition in middle-aged persons with *APOE* $\epsilon 3/\epsilon 3$ genotype

Sterling C. Johnson<sup>a,b,c,\*</sup>, Asenath La Rue<sup>a,c</sup>, Bruce P. Hermann<sup>a,c</sup>, Guofan Xu<sup>b,c</sup>,  
Rebecca L. Kosciak<sup>a</sup>, Erin M. Jonaitis<sup>a</sup>, Barbara B. Bendlin<sup>b,c</sup>, Kirk J. Hogan<sup>a</sup>, Allen D. Roses<sup>d</sup>,  
Ann M. Saunders<sup>d</sup>, Michael W. Lutz<sup>d</sup>, Sanjay Asthana<sup>a,b,c</sup>, Robert C. Green<sup>e</sup>, Mark A. Sager<sup>a,c</sup>

<sup>a</sup>Wisconsin Alzheimer's Institute, University of Wisconsin School of Medicine and Public Health, Madison, WI, USA

<sup>b</sup>Geriatric Research Education and Clinical Center, William S. Middleton Memorial Veterans Hospital, Madison, WI, USA

<sup>c</sup>Wisconsin Alzheimer's Disease Research Center, University of Wisconsin School of Medicine and Public Health, Madison, WI, USA

<sup>d</sup>Deane Drug Discovery Institute, Duke University, Durham, NC, USA

<sup>e</sup>Boston University Schools of Medicine and Public Health, Boston, MA, USA

### Abstract

**Objective:** Apolipoprotein E (*APOE*) genotypes are associated with variable risk of developing late-onset Alzheimer's disease (LOAD), with *APOE* epsilon 4 (*APOE*  $\epsilon 4$ ) having higher risk. A variable poly-T length polymorphism at rs10524523, within intron 6 of the translocase of the outer mitochondrial membrane (*TOMM40*) gene, has been shown to influence age of onset in LOAD, with very long (VL) poly-T length associated with earlier disease onset, and short poly-T length associated with later onset. In this study, we tested the hypothesis that brain and cognitive changes suggestive of presymptomatic LOAD may be associated with this *TOMM40* polymorphism.

**Methods:** Among healthy *APOE*  $\epsilon 3$  homozygous adults (N = 117; mean age, 55 years), we compared those who were homozygous for VL/VL (n = 35) *TOMM40* poly-T lengths (who were presumably at higher risk) with those homozygous for short (S/S; n = 38) poly-T lengths, as well as those with heterozygous (S/VL; n = 44) poly-T length polymorphisms, on measures of learning and memory and on structural brain imaging.

**Results:** The VL/VL group showed lower performance than the S/S *TOMM40* group on primacy retrieval from a verbal list learning task, a finding which is also seen in early Alzheimer's disease. A dose-dependent increase in the VL *TOMM40* polymorphism (from no VL alleles, to S/VL heterozygous, to VL/VL homozygous) was associated with decreasing gray matter volume in the ventral posterior cingulate and medial ventral precuneus, a region of the brain affected early in LOAD.

**Conclusions:** These findings among *APOE*  $\epsilon 3/\epsilon 3$  late middle-aged adults suggest that a subgroup with VL *TOMM40* poly-T lengths may be experiencing incipient LOAD-related cognitive and brain changes.

© 2011 The Alzheimer's Association. All rights reserved.

### Keywords:

Alzheimer's disease; Posterior cingulate; Risk factors; Genetics; *APOE*; *TOMM40*

### 1. Introduction

Apolipoprotein E (*APOE*) epsilon 4 ( $\epsilon 4$ ) is considered to be the primary genetic risk factor [1–3] for late-onset Alzheimer's disease (LOAD; Alzheimer's disease [AD]). The

other two *APOE* variants, *APOE*  $\epsilon 2$  and  $\epsilon 3$ , are considered to be low and with neutral risk, respectively. However, the influence of  $\epsilon 4$  only accounts for a portion of the heritability. In population studies of frequency of *APOE* variants among AD cases, the proportion without an  $\epsilon 4$  allele is 36% to 50% [4–6]; thus, approximately 40% to 50% of AD cases require an explanation beyond *APOE*  $\epsilon 4$  [7].

Another gene, translocase of the outer mitochondrial membrane (*TOMM40*), has been proposed as a genetic risk factor in LOAD [8,9]. The *TOMM40* gene is

\*Corresponding author. Tel.: 608-256-1901 x 11946; Fax: 608-280-7165.

E-mail address: scjohnson@wisc.edu

adjacent to *APOE*, and in a genome-wide association study of 381 participants in the Alzheimer's Disease Neuroimaging Initiative (ADNI), a *TOMM40* risk allele (rs2075650, distinct from the poly-T polymorphism being reported in this article) was twice as frequent in persons with AD as compared with normal controls [10], and was associated with hippocampal atrophy (although not at a genome-wide level of significance, and not significantly different from *APOE*). In a larger ADNI sample of normal controls, persons with mild cognitive impairment (MCI) and AD, a quantitative trait analysis demonstrated a significant association between this same *TOMM40* allele and bilateral hippocampal and left amygdalar gray matter (GM) densities and volumes [11]. In these studies, both *APOE* and *TOMM40* genes were associated with GM loss in regions known to be vulnerable to AD pathology.

More recently, a variable length poly-T sequence (rs10524523) within intron 6 of the *TOMM40* gene has been shown to predict age of onset of LOAD [8]. In that study, the length distributions of the poly-T alleles were found to have a distinct relationship to *APOE* alleles ( $\epsilon 3$  or  $\epsilon 4$ ). On the basis of the number of the T-residues, *TOMM40* alleles were categorized as short (<21), long (21–29), or very long (VL;  $\geq 30$ ). For *APOE*  $\epsilon 3/\epsilon 3$  genotypes, *TOMM40* appeared to be bimodally distributed into either short or VL alleles. Among *APOE*  $\epsilon 3/\epsilon 4$  persons, the linkage of a short or VL poly-T allele to the *APOE*  $\epsilon 3$  allele was associated with a later or earlier age of onset of AD, respectively.

The purpose of this study was to determine the potential contribution of poly-T length at *TOMM40* rs10524523 to cognition and brain atrophy among the most common *APOE* genotype in a late middle-aged cohort by comparing verbal memory measures and magnetic resonance imaging (MRI) GM volumes in areas of the brain known to be affected in early AD. Thus, we only studied people with an *APOE*  $\epsilon 3/\epsilon 3$  genotype (who ostensibly have neutral risk for AD under the prevailing view). Because poly-T length has been associated with age of onset of LOAD, we hypothesized that AD-related differences might be detectable between S/S, S/VL, and VL/VL *TOMM40* poly-T groups. Specifically, we hypothesized that the VL/VL group would most resemble AD on quantitative measures of verbal memory and brain volume in the posterior cingulate, a region that is involved in recognition memory and metacognition [12,13], is known to have early AD pathology [14], and has been previously associated with risk for AD [15,16].

## 2. Methods

### 2.1. Participants

This study was conducted with the approval of the University of Wisconsin Institutional Review Board and all subjects provided signed informed consent before participa-

tion. The individuals in this study were participants in the Wisconsin Registry for Alzheimer's Prevention (WRAP), a longitudinal cohort study of late middle-aged persons with or without a parental family history (FH) of AD [17,18]. Recruiting and assessment procedures for WRAP have been previously described [17]. Briefly, enrollment in WRAP is limited to English-speaking persons between the ages of 40 and 65 years and who have or had a parent with autopsy-confirmed or probable AD, as defined by National Institute of Neurological and Communicative Diseases and Stroke/Alzheimer's Disease and Related Disorders Association research criteria [19]. Persons without a FH were eligible for WRAP as controls if their mothers survived to a minimum age of 75 years and fathers to a minimum age of 70 years, without AD, other dementia, or significant memory deficits.

The present analyses were conducted on a subset of these participants who had successfully completed cognitive and imaging studies, had been genotyped for both *APOE* and *TOMM40* poly-T, and had been found to have an *APOE* genotype of  $\epsilon 3/\epsilon 3$  and a *TOMM40* poly-T genotype of either homozygous short (S/S), homozygous very long (VL/VL), or heterozygous (S/VL) *TOMM40* genotype. This design was chosen on the basis of the bimodal distribution of *TOMM40* alleles among *APOE*  $\epsilon 3/\epsilon 3$  subjects as reported in Reference 8, which was also evident in the present sample. The histogram in Fig. 1 depicts the bimodal distribution of poly-T length among all available *APOE*  $\epsilon 3/\epsilon 3$  subjects who met the criteria described earlier in the text (N = 120). Almost all poly-T lengths in this cohort (98%) were S (<21) or VL ( $\geq 30$ ). Of those in Fig. 1, three subjects with the L allele (poly-T lengths from 21–29) were excluded before the analysis because of their low frequency among *APOE*  $\epsilon 3/\epsilon 3$  individuals (two with S/L and one with L/VL genotypes were excluded), leaving a total of 117 subjects who fell into three separate *TOMM40* rs10524523 genotypes: S/S, n = 38; S/VL, n = 44; VL/VL, n = 35. Demographic features are shown in Table 1.

### 2.2. Procedures

#### 2.2.1. DNA samples and genotyping

DNA was extracted from blood. Samples were aliquoted on 96-well plates for determination of *APOE* and *TOMM40* genotypes at Polymorphic DNA Technologies (polymorphicdna.com, Alameda, CA). Four different DNA polymorphisms were determined for each subject. Three of these polymorphisms, rs429358, rs7412, and rs8106922, are single nucleotide polymorphisms (SNPs), and the fourth, rs10524523, is a poly-T length polymorphism located in an intronic region of *TOMM40*. SNPs rs429358 and rs7412 define the *APOE* genotype, and rs8106922, within *TOMM40*, has been associated with risk of AD. For all four polymorphisms, polymerase chain reaction (PCR) amplification of the region surrounding each variant site was

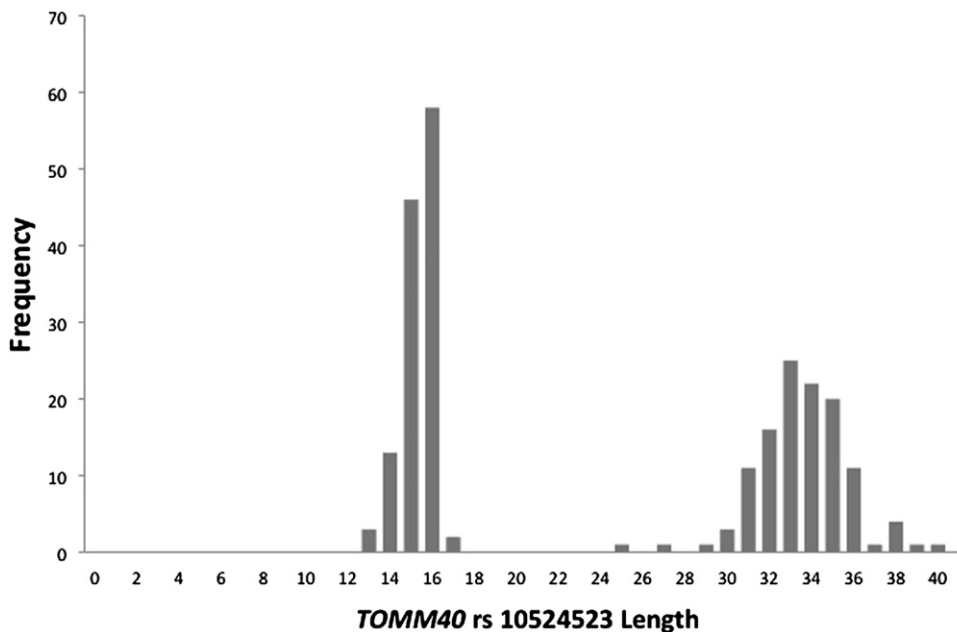


Fig. 1. TOMM40 allele frequency distributions. Frequency distributions of the TOMM40 poly-T repeat length for 120 APOE3/3 subjects. The histogram clearly shows a bimodal distribution, with most (98%) occurring at  $\leq 20$  repeats (short) or  $\geq 30$  repeats (very long). Each individual provides two poly-T lengths, representing each chromosome. Three individuals with poly-T repeat lengths  $>20$  and  $<30$  were classified by definition as an L allele, and excluded from further analysis.

used to create short DNA amplicons that were subsequently used as templates for Sanger sequencing. The APOE genotype and TOMM40 rs10524523 poly-T length for each DNA strand were reported.

### 2.2.2. Nested PCR

For each target polymorphism, human genomic DNA samples were first PCR-amplified with a pair of “outside” oligonucleotide primers, and those amplification products were then reamplified with a second pair of “inside” primers. The primers used for these amplifications are shown in Table 1.

The first “outer” PCR reaction was performed in a 384-well plate by combining approximately 10 ng of genomic DNA with 1 U of KlenTaq1™ (Ab Peptides, Inc., St Louis, MO), 0.5  $\mu$ L of 10 $\times$  PCR Buffer, 1.0  $\mu$ L of 5.0 M betaine, 0.175  $\mu$ L dimethyl sulfoxide (DMSO), 0.8  $\mu$ L of a mixture of dNTPs (2.5 mM each), 0.5  $\mu$ L of a mixture of the two outer oligonucleotide primers (2  $\mu$ M each), plus water to bring the entire reaction volume per well to a total of 5.0  $\mu$ L. Plates were placed in a thermocycler and subjected to 40 cycles of the following conditions: 94°C for 20 seconds, 55°C for 25 seconds, and 72°C for 60 seconds.

The second “inner” PCR reaction was performed in a different 384-well plate by combining 0.8  $\mu$ L of the product from the first PCR reaction with 0.25 U of Klen Taq, 0.5  $\mu$ L of 10 $\times$  PCR Buffer, 1.0  $\mu$ L of 5.0 M betaine, 0.175  $\mu$ L DMSO, 0.2  $\mu$ L of a mixture of deoxynucleotide triphosphates (dNTPs) (2.5 mM each), 1.0  $\mu$ L of a mixture of the two inner oligonucleotide primers (2  $\mu$ M each), plus water to bring the entire reaction volume per well to a total of

5.0  $\mu$ L. Plates were placed in a thermocycler and subjected to 40 cycles of the following conditions: 94°C for 20 seconds, 55°C for 25 seconds, and 72°C for 60 seconds. These reaction products were then purified using PCR Cleanup Plates (MultiScreen384 PCR, Millipore Corp., Billerica, MA), with a final elution of each sample with 16  $\mu$ L of water.

### 2.2.3. Sanger sequencing reactions

For each inner PCR product template, two separate Sanger sequencing reactions were performed using either the forward or reverse “inner” PCR primer as a sequencing primer. Reactions were performed in a new 384-well plate by combining 0.8  $\mu$ L of the eluent from the PCR cleanup plates with 0.125  $\mu$ L Big Dye Mix (Applied BioSystems, Inc., Foster City, CA), 0.215  $\mu$ L 5 $\times$  Dilution Buffer (Applied BioSystems, Inc.), 0.25  $\mu$ L of a 1  $\mu$ M solution of one of the “inner” primers, 0.105  $\mu$ L DMSO, 0.6  $\mu$ L of 5 M betaine, plus water to bring the entire volume to 3.0  $\mu$ L. Plates were then placed in a thermocycler and subjected to 30 cycles of the following conditions: 96°C for 10 seconds, 50°C for 15 seconds, and 60°C for 120 seconds. These reaction products were then purified using Sequencing Reaction Cleanup Plates (MultiScreen384 SEQ, Millipore Corp.), with a final elution of each sample with 20  $\mu$ L of 0.3 mM ethylenediaminetetraacetic acid solution. From each well, this eluent was transferred to a fresh 384-well plate and loaded onto a 3730XL DNA Analyzer (Applied BioSystems, Inc.) running with a 36 cm capillary array using the “Rapid” run module. This instrument created a forward and reverse electropherogram data file for the region of each target variant for each genomic sample.

Table 1  
Primers for PCR amplification

SNP	Primer sequence
rs429358	Outer: 5'-ACTGTGCGACACCCT-3' and 5'-CTGAGGCCGCGCT-3' Inner: 5'-GCGCTGATGGACG-3' and 5'-CCTGGTACACTGCCA-3'
rs7412	Outer: 5'-CTGGAGGAACAACACTGAC-3' and 5'-CCCATCTCCTCCATC-3' Inner: 5'-GACATGGAGGACGTG-3' and 5'-GCTCCTGTAGCGG-3'
rs8106922	Outer: 5'-AGGCCCTATTCCTG-3' and 5'-GTGCAAGACTTCATCTCAA-3' Inner: 5'-CATGCTAGCAGGCCA-3' and 5'-ATCTGCAGAGACAGAAATG-3'
rs10524523	Outer: 5'-CTGGGCTCAAATGAACC-3' and 5'-CAAATGTGATTTTATAGGGCCA-3' Inner: 5'-GAGATGGGGTCTCACT-3' and 5'-AGAGAGGGAGGGACA-3'

Abbreviations: PCR, polymerase chain reaction; SNP, single nucleotide polymorphism.

### 2.3. Data analysis for the three SNP targets

For each SNP target and genomic sample, the forward and reverse electropherograms were processed by a proprietary sequence analysis system called Agent (Paracel; Celera Genomics, Alameda, CA). This system performs a bidirectional alignment of the sequencing data to the known reference sequence of each target region and reports the actual nucleotide calls found at each sequence position, along with “quality values” indicating the relative confidence in each call. It is tuned to recognize heterozygous nucleotide mixtures and provides quality values for mixed-base calls as well as single-base calls. For this particular set of targets, nucleotide calls were made for the entire 101-bp region surrounding each target SNP (50 bp flanking each side of each SNP), but only the genotype calls at the actual SNPs of interest were reported. *APOE* genotype was determined from the rs429358, rs7412 SNPs, according to the following allele mapping: *APOE*  $\epsilon$ 2 if rs429358 = T, rs7412 = T; *APOE*  $\epsilon$ 3 if rs429358 = T, rs7412 = C; and *APOE*  $\epsilon$ 4 if rs429358 = C, rs7412 = C.

### 2.4. Data analysis for the poly-T length polymorphism target

Simple polymeric repeats such as poly-T tracts are difficult to analyze with methods that use PCR because of the slippage that may occur during each PCR cycle causing the newly polymerized strand to have either one less or one more residue than the template strand. After numerous cycles of PCR, the amplification product contains a complex mixture of products. The direct sequencing of such mixed templates is therefore very problematic because the sequencing electropherograms for such regions will be the superposition of the electropherograms of the numerous components of that mix-

ture. For poly-T regions of length  $>10$ -T-residues, the degree of signal degradation becomes significant, and for  $N = \geq 15$ , an accurate interpretation of the number of Ts is difficult, if not impossible. Because the rs10524523 poly-T target has known alleles longer than  $N = 40$ , a conventional interpretation of the electropherograms was not a practical way to determine these genotypes. An analysis strategy was developed on the basis of known properties of the sequencing reactions. The DNA polymerase adds an extra dye-labeled deoxyadenosine residue right after the end of a PCR template as part of the dye-terminator sequencing reaction. In a sequencing read of a PCR template without a homopolymer present, this produces one very large “A-peak” at the end of the electropherogram. In the case of a sequencing read that contains a homopolymer, multiple A-peaks are observed, with each such peak corresponding to the end of the various component templates present. This variation in template length is caused by the variation in the value of N for each component. The position of the A-peaks correspond to the N values (poly-T length) of each component. The reverse PCR primer used to produce the template was chosen in a region that was completely devoid of A-residues so that any A-peaks observed in that region would represent completely extended products and not internal A-peaks. The following amplification product was produced:

```
GGGGTCTCACTATGTCACCTAGGCTTGTCTCCAA
CTGCTGACCTCAAGCTGTCTCTTGCCCCAGCCC
TCCAAAGCATTGGGATTACTGGCATGAGCCATTGC
ATCTGGCTTTTTTTTTTTTTTTTTTTTTTTTTTTTTTTT
GAGATGGGGTCTACCATGTTGCCGGGGCTGGC
TTCGAATGCCTAGGCTCAAGCAATCCTCCCTTCTCA
GCCTCCCAAATAGCTGGGATTACAGGCACGTGCCA
CCACGCCAGGCTTGTTTTCTTTCCCTG
TCCCTCCCTCTCT_addedA
```

When the forward sequencing reaction was carried out, the extra A-peaks were added at the position shown earlier as “addedA.” In the forward read, unambiguous sequence data were obtained up to the poly-T region; however, a complex mixture of peaks was observed after the poly-T stretch. The absolute length of the poly-T region was obtained by using the “C-peak” (just upstream from the poly-T) as a reference base relative to the region of “added A.” The number of T-residues (N), represented by a given A-peak, was calculated by taking the peak number in the electropherogram for the A-peak and subtracting the peak position of the C-peak and finally, subtracting 145 (the length of the sequence from the end of the poly-T to the end of the reference sequence). Thus, the value of N for each component is as follows:  $N = A - C - 145$ , where A is the peak number for a given A-peak and C is the peak number for the reference C-peak. The approach was validated by cloning a variety of templates and sequencing the clones to determine the actual N-value in each clone. The poly-T regions in cloned templates do not suffer from PCR slippage and so the poly-T length can be unambiguously determined. These clones were used as calibration standards. Without any

adjustments to the calculations, the standard error in this method was approximately 1 T-residue. The main source of error was that the nucleotide position numbering determined by the base-calling software is sometimes erroneous. These position-numbering errors were spotted by manual review of each electropherogram, and when this error is adjusted, the standard error in the method was  $<0.5$  T-residue. If the genomic sample contains two rs10524523 alleles with similar N-values, for example  $N = 33$  and  $N = 35$ , the two sets of A-peaks may overlap to such a degree that it is difficult to ascertain specific peaks by visual inspection (e.g., differentiating 33 and 35, 32 and 36, or possibly homozygous 34). This problem was addressed by using several known authentic standard mixtures, with corresponding rules for visually determining the most likely composition of each possible overlapping peak pattern. The estimated error in this assessment may be as much as 1 additional T-residue, there the genotype calls made on samples with two similar rs10524523 alleles are somewhat less accurate.

## 2.5. Neuropsychological and other laboratory assessment

WRAP participants complete a health history form and a battery of laboratory and neuropsychological tests which are described in detail elsewhere [17]. Because impairment in secondary memory is often the earliest cognitive indicator of AD pathology [20], performance on the Rey Auditory Verbal Learning Test (AVLT) was examined. The AVLT entails learning and recall of a list of 15 unrelated nouns. We have previously reported serial position effects on the AVLT, in which WRAP participants with parental FH of AD show a reduced primacy effect (e.g., fewer recalled words from the beginning of the list), as compared with persons without a FH. For analyses in the present report, the primacy region was defined as serial position items as number 1 through 4, the middle region as items 5 through 11, and recency region as items 12 through 15 [18].

## 2.6. Imaging

MRI (General Electric 3.0 Tesla, Waukesha, WI) was performed as part of related research on three scanners (90 on scanner 1; 19 on scanner 2; 8 on scanner 3) with comparable parameters. *TOMM40* genotype distributions did not differ between scanners. Imaging included a volumetric T1-weighted inversion recovery prepared fast SPGR sequence. T2-weighted imaging was also performed and visually inspected by a neuroradiologist to rule out overt pathology that would exclude subjects from further analysis. For scanner 1, the 3D T1-weighted volume was acquired in the axial plane with a 3D fast spoiled gradient-echo (3D EFGRE) sequence using the following parameters: inversion time (TI) = 600 ms; repetition time (TR) = 8.4 ms; echo time (TE) = 1.7 ms; flip angle =  $10^\circ$ ; acquisition matrix =  $256 \times 192 \times 124$ , interpolated to  $256 \times 256 \times 124$ ; field of view (FOV) = 240 mm; slice

thickness = 1.2 mm (124 slices); and acquisition time  $\sim 7.5$  minutes. For scanner 2, the whole brain was imaged in the sagittal plane with the 3D EFGRE sequence using the following parameters: TI = 900 ms; TR = 6.6 ms; TE = 2.8 ms; flip angle =  $8^\circ$ ; acquisition matrix =  $256 \times 256 \times 166$ , FOV = 260 mm; slice thickness = 1.2 mm (166 slices). For scanner 3, the images were acquired in axial plane with the 3D EFGRE sequence using the following parameters: TI = 450 ms; TR = 8.1 ms; TE = 3.2 ms; flip angle =  $12^\circ$ ; acquisition matrix =  $256 \times 256 \times 156$ , FOV = 260 mm; slice thickness = 1.0 mm (156 slices).

## 2.7. Voxel-based morphometry

Processing of the T1-weighted images for the cross-sectional analysis was performed using a six class segmentation tool in Statistical Parametric Mapping software <http://www.fil.ion.ucl.ac.uk/spm> (SPM8). The procedure involved segmentation of the original anatomic images into classes including GM, white matter, cerebrospinal fluid, skull, fat tissue, and image background using spatial priors; normalization (12-parameter affine transformation and nonlinear deformation with a warp frequency cutoff of 25) of the segmented maps to the Montreal Neurological Institute template; bias correction; and modulation which scaled the final GM maps by the amount of contraction or expansion required to warp the images to the template. The final result was a GM volume map for each participant, in which the total amount of GM remained the same as in the original images. The spatially normalized GM maps were smoothed using an 8-mm isotropic Gaussian kernel to optimize signal to noise ratio and facilitate comparison across participants. Analysis of GM used an absolute threshold masking of 0.1.

## 2.8. Statistics

Sample characteristics were compared across TOMM40 groups using one-way analysis of variance and chi-square tests. Cognitive outcomes were compared across TOMM40 groups through analysis of covariance using age, gender, and education level as covariates, as these are known to influence verbal memory performance. Given the *a priori* expectation that the S/S and VL/VL groups represented the lowest and highest risk of earlier age of onset of AD [8,9], separate analysis of covariance (ANCOVA) tests were also performed and effect sizes [21] were calculated for these two groups. Variables were transformed as needed to normalize distributions; alpha was 0.05 for all tests described in this study.

GM maps were also compared between the three genetically stratified groups. For voxel-wise univariate statistics, we conducted an analysis of covariance. Age was treated as a covariate of interest and was allowed to interact with brain volume. Total intracranial volume was included as a covariate of no interest. The voxel level threshold was  $P < .005$ , with a minimum cluster size of 200 contiguous voxels. Because of the specific *a priori* hypothesis regarding the posterior



Table 2  
Characteristics of *APOE*  $\epsilon 3/\epsilon 3$  study population by *TOMM40* group

Group characteristic	<i>TOMM40</i> S/S (n = 38)	<i>TOMM40</i> S/VL (n = 44)	<i>TOMM40</i> VL/VL (n = 35)
Age, mean (SD)*†	54.39 (6.25)†	53.43 (6.08)†	58.69 (5.67)†
Education, % with $\geq$ BA	73.7	68.2	77.1
Gender, % female	71.1	56.8	60.0
Family history, % positive††	50.0†	77.3†	54.3†
Verbal IQ	114.87 (12.0)	113.41 (10.0)	116.71 (6.4)
Performance IQ	114.61 (10.5)	114.55 (10.6)	113.20 (9.4)

Abbreviations: *APOE*, apolipoprotein E; *TOMM40*, translocase of the outer mitochondrial membrane 40; S, short; VL, very long.

\* VL/VL > (S/S, S/VL).

† Significant group differences,  $P < .05$ .

‡ S/VL > (S/S, VL/VL).

cingulate, we used a predefined search region limited to the posterior cingulate and precuneus and used the false discovery rate corrected cluster statistic for group inference. Plots of significant group differences and group by age effects were made by extracting the first principal component of the whole cluster using the Volume of Interest tool in SPM8.

### 3. Results

Sample characteristics are shown in Table 2 and other health characteristics are shown in Table 3. There were no significant differences between the two *TOMM40* poly-T groups on gender, education, or verbal or performance (VIQ, PIQ) scores. The VL/VL group was significantly older, and the S/VL group had a higher percentage of participants with a parental FH of AD than the other two groups. The groups did not differ on cholesterol level, systolic or diastolic blood pressure, body mass index, or self-reported diagnosis of heart disease, hypertension, hypercholesterolemia, or diabetes (Table 3). Homocysteine levels were normal across all groups, but significantly higher ( $P < .05$ ) in the VL/VL group compared with the S/S group, and there was a trend ( $P = .052$ ) for more S/VL participants to report a history of hypertension compared with the other groups.

Serial position data for the AVLT, summarized in Table 4, were available for 112 participants (95.7%). After adjusting for age, gender, and education, the main effect of *TOMM40* poly-T length in the three group model was marginally sig-

nificant for two memory measures: retrieval from the primacy region ( $P = .075$ ) and total recall ( $P = .055$ ), and in each case, the order of performance was S/S > S/VL > VL/VL. In the exploratory ANCOVA comparing S/S and VL/VL genotypes, *TOMM40* poly-T length effects were significant for both primacy ( $F[1,65] = 4.48$ ,  $P = .038$ ) and total recall ( $F[1,65] = 5.77$ ,  $P = .019$ ). The effect sizes were medium to large for these comparisons, and small for the nonsignificant comparisons. No between group differences in mid-position and recency data were observed for either the three- or two-level *TOMM40* analyses.

#### 3.1. *TOMM40* poly-T VL dose effect on brain volume

A voxel-wise analysis for group differences was done to identify brain regions where there was a dose effect of VL, that is, decreasing volume with more VL *TOMM40* alleles after accounting for age and total intracranial volume. Regions where significant group effects were observed are shown in Fig. 2 and included the left ventral posterior cingulate (voxel coordinate  $x, y, z$ :  $-9, -66, 25$ ;  $t = 4.10$ ,  $P < .0001$ ; cluster size 796 voxels,  $P = .005$ ) and the cuneus ( $x, y, z$ :  $-2, -85, 13$ ;  $t = 3.43$ ,  $P < .0001$ ; cluster size 376 voxels,  $P = .042$ ).

#### 3.2. Voxel-based morphometry age by group interaction

Next, a whole-brain analysis was conducted to determine whether age-related atrophy differed by *TOMM40* poly-T

Table 3  
Health attributes of *APOE*  $\epsilon 3/\epsilon 3$  study population by *TOMM40* group

Group characteristic	<i>TOMM40</i> S/S (n = 38)	<i>TOMM40</i> S/VL (n = 44)	<i>TOMM40</i> VL/VL (n = 35)
Heart disease (%)	7.9	15.9	11.4
Hypertension (%)*	5.3*	22.7*	8.6*
Hypercholesterolemia (%)	31.6	36.4	31.4
Diabetes (%)	0	0	5.7
Cholesterol	214.21 (36.04)	202.77 (32.93)	196.12 (32.55)†
Homocysteine*‡	7.71 (2.14)*	8.28 (1.77)*	8.89 (2.54)*†
Systolic BP	128.47 (20.23)	128.75 (17.11)	126.60 (16.29)†
Diastolic BP	75.05 (11.84)	75.43 (10.67)	73.06 (10.83)
BMI	26.87 (3.87)	27.48 (4.73)	26.53 (4.26)†

Abbreviations: *APOE*, apolipoprotein E; *TOMM40*, translocase of the outer mitochondrial membrane 40; S, short; VL, very long.

\* Significant group differences,  $P < .05$ ; for hypertension,  $P = .052$ .

† Raw data were log-transformed to reduce skewness for the purpose of mean comparisons.

‡ VL/VL > S/S.

Table 4  
Performance of low (S/S), intermediate (S/VL), and high (VL/VL) risk groups on the Rey Auditory Verbal Test

Serial position	TOMM40 S/S (n = 38)	TOMM40 S/VL (n = 42)	TOMM40 VL/VL (n = 32)	Cohen's D for S/S vs VL/VL
Primacy (maximum = 20)*	15.84 (2.82)*	14.88 (2.28)	14.22 (2.56)*	0.599
Midposition (maximum = 35)	23.11 (5.30)	20.16 (5.09)	21.76 (5.37)	0.253
Recency (maximum = 20) <sup>†</sup>	16.18 (2.74)	15.25 (2.40)	15.76 (2.61)	0.157
Total correct (5 trials) (maximum = 75)*	55.13 (7.73)*	52.02 (7.52)	49.63 (7.57)*	0.718

\* Statistically significant group differences ( $P < .05$ ).

<sup>†</sup> Distribution transformed for statistical comparison.

group. Rather than interrogating the entire brain, this comparison was restricted to regions previously shown to be vulnerable to AD including the amygdala, hippocampus, parahippocampal gyrus, posterior cingulate, and precuneus. No effects were found at the prespecified spatial threshold of 200 voxels. However, two smaller clusters were noted in the retrosplenial area ( $-9, -54, 22$ ;  $t = 3.21$ ;  $P = .001$ ; cluster size 35 voxels; see Fig. 3), and the right anterior mesial temporal lobe ( $36, -1, -23$ ;  $t = 2.83$ ;  $P = .003$ ; cluster size 23 voxels), indicating a relatively stronger VL-associated negative slopes with age.

#### 4. Discussion

Although presence of one or more *APOE*  $\epsilon 4$  alleles has been the most robust genetic risk factor for LOAD, this study found that in asymptomatic late middle-aged  $\epsilon 3/\epsilon 3$  individuals, another genetic polymorphism in *TOMM40*, poly-T length at rs10524523 is associated with cognitive and GM volume differences that are suggestive of incipient AD. This same *TOMM40* poly-T polymorphism has previously been shown to be associated with age of onset in LOAD [8], and the present study suggests that AD-related brain and cognitive changes may be occurring years before the onset of clinical symptoms in *APOE*  $\epsilon 3$  homozygotes.

The *TOMM40* homozygous short and homozygous VL groups had different serial position curves on a list learning task. Deficits in learning and memory are distinguishing features of mild and very mild LOAD and amnesic MCI. Further, mild learning and memory dysfunction have been shown to presage development of clinical AD in community and population cohorts [20,22,23]. Normal aging does not affect the basic shape of the serial position curve, even though the total amount recalled is typically lower for older persons [24]. By contrast, patients with AD, even in very mild stages, show an increase in recency and decrease in primacy [25–27], likely reflecting AD-associated changes in episodic memory systems for encoding and retrieval that are seen in the hippocampus [28,29], entorhinal cortex [28,30], and ventral posterior aspects of the cingulate including the isthmus and retrosplenial area [13–15,31]. Although there was a medium effect size in the primacy effect, no group was abnormally low, which is to be expected in an asymptomatic population. Replication of these preliminary cognitive trends and MRI findings with independent

samples is needed, as well as a longitudinal study is needed to determine whether variation in intronic poly-T length at *TOMM40* rs10524523 is associated with progressive changes in cognition and regional brain volume in this cohort.

The difference in ventral posterior cingulate volume in this study is particularly intriguing as this region is not only implicated in memory retrieval, but it is also atrophic and hypometabolic in mild AD [14] and MCI [32]. Dose-dependent hypometabolism in asymptomatic *APOE*  $\epsilon 4$  carriers [15,33] has been found in this region. It is also one of the earliest regions to show increased amyloid burden measured using positron emission tomography with Pittsburgh Compound B [34–36]. The GM finding in this study is complementary to that of the genome-wide association study, using the chronologically older ADNI cohort in which a separate *TOMM40* polymorphism was associated with GM volume differences in normal persons and those with a diagnosis of MCI or AD [10,11].

The VL/VL group was 4 years older than the S/S group and thus age was included as a covariate. To further alleviate the potential concern that age is unduly influencing the result, we conducted a secondary analysis in which we trimmed the tails of the age distribution to include only those subjects between ages 56 and 66 years. Age was no longer significantly different, whereas the group effect in the posterior cingulate remained significant at an uncorrected voxel level alpha of 0.005 and 200 contiguous voxels.

In previous studies, we and others have found laboratory, cognitive, and neuroimaging evidence for presumptive AD in asymptomatic persons with a first degree FH of AD [13,16,18,35,37–39]. Some studies report interactions with *APOE* genotype, others report independent FH effects, suggesting the presence of an unknown gene(s) that may be responsible for the FH effect. In this study, the S/S and VL/VL groups did not differ on the proportion of subjects with parental FH. However, the S/VL group had a greater proportion with FH. Persons with a FH have a high prevalence of *APOE*  $\epsilon 4$  alleles [17,40], which may interact in some way with *TOMM40* to explain FH genetic risk. The interplay of FH, *TOMM40*, and *APOE* genotype is the topic of ongoing studies.

In conclusion, this study suggests that a subgroup of late middle-aged *APOE*  $\epsilon 3/\epsilon 3$  homozygotes who carry the *TOMM40* VL/VL genotype may be at higher risk for AD than current paradigms for AD risk would predict. These

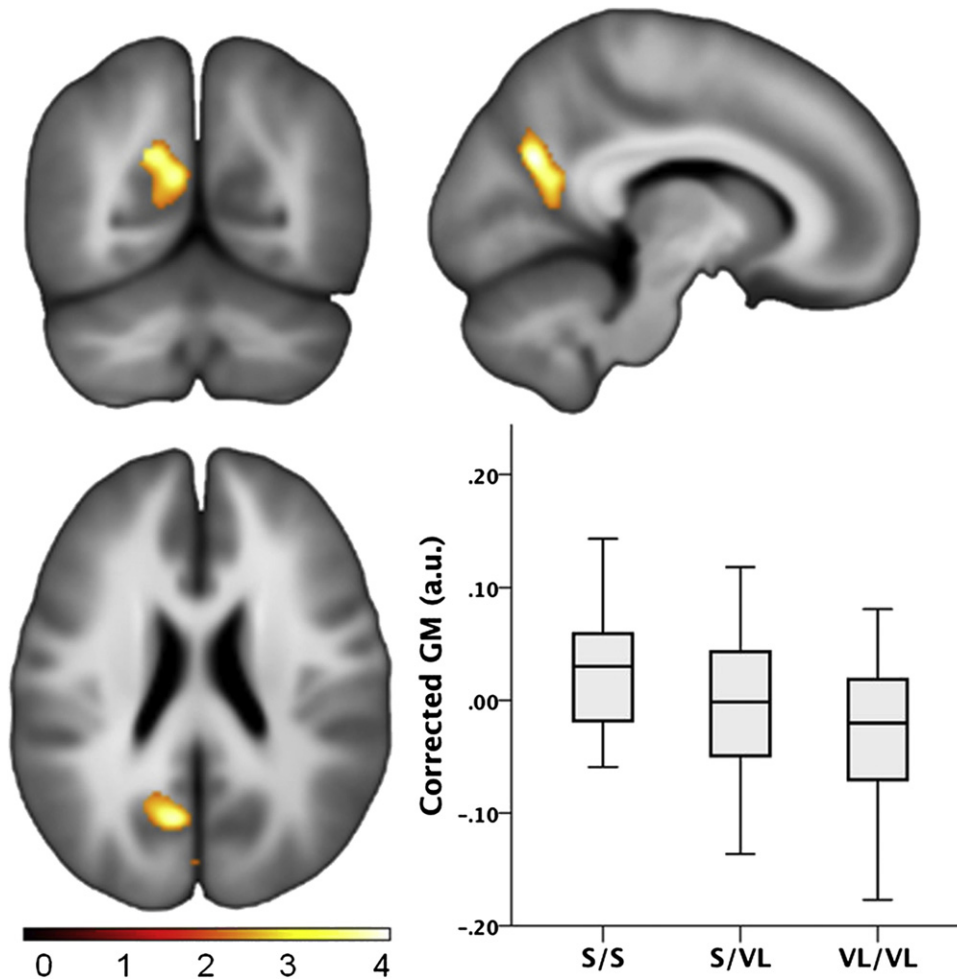


Fig. 2. Gray matter (GM) group differences. Voxel-wise GM volume comparison between the S/S, S/VL, and VL/VL *TOMM40* groups depicting a “dose effect.” The box plots depict the mean effect graphically, showing the first principle component scaled in arbitrary units extracted from the cluster in the posterior cingulate. The S/S group had the greatest volume, followed by the S/VL group, and the VL/VL group had the lowest volume.

asymptomatic subjects performed worse on a measure of episodic learning and also showed smaller volume in the posterior cingulate, a region well-known to be affected early in the course of AD. The study is limited by the relatively small number of subjects who were *APOE*  $\epsilon 3/\epsilon 3$  and had both *TOMM40* genotyping and structural imaging. The VL/VL group was also older than the other groups, although the analyses were statistically adjusted for age. If confirmed in independent studies, these findings suggest that *TOMM40* poly-T length may help to explain residual AD risk among the most common *APOE* genotype in the population. The clinical significance of *TOMM40* variants in this population will be elucidated with further longitudinal study to clinical endpoints of MCI and AD.

#### Acknowledgments

The authors gratefully acknowledge the assistance of Shawn Bolin, Maggie Kengott, Gail Lange, Kimberly Mueller, Christine Pire-Knoche, Janet Rowley, and Susan

Schroeder for WRAP data collection. They especially thank the WRAP participants.

This study was supported by grants for the NIH: R01 AG027161; R01 AG021155; P50 AG033514 Alzheimer's Disease Research Center; and UL1RR025011 Clinical and Translational Science Award. Dr. Roses and Dr. Lutz are supported in part by RC1AG035635-01. Portions of this research were supported by the Helen Bader Foundation, Northwestern Mutual Foundation, Extencare Foundation, and from the Veterans Administration including facilities and resources at the Geriatric Research Education and Clinical Center of the William S. Middleton Memorial Veterans Hospital, Madison, WI.

Allen Roses: Dr. Roses is the President of three companies filed as S-Corporations in the state of North Carolina: Cabernet Pharmaceuticals, Inc. is a pipeline pharmacogenetic consultation and project management company that has other pharmaceutical companies as clients; Shiraz Pharmaceuticals, Inc., is focused on the commercialization of diagnostics, including companion diagnostics, for universities,



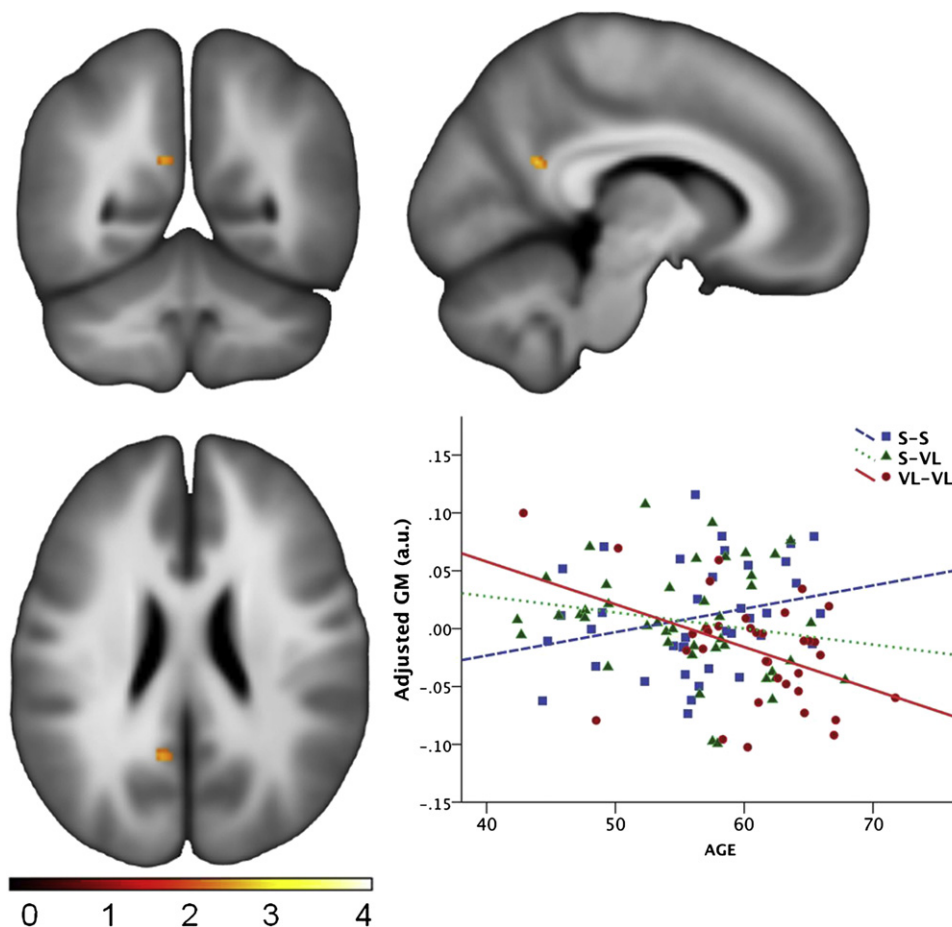


Fig. 3. GM by age slope differences. (A) voxel-wise group by age interaction was found in a small cluster in the retrosplenial aspect of the posterior cingulate, indicating that the effect of age on GM atrophy differs as a function of group. (B) Plot of the effect indicating a greater negative slope with age in the VL/VL group. Note that the y-axis is statistically adjusted GM, and thus should not be interpreted strictly as absolute GM.

pharmaceutical companies, and biotechnology companies; Zinfandel Pharmaceuticals is the sponsor of OPAL (Opportunity to Prevent Alzheimer's Disease) which is a combined clinical validation of a diagnostic and a pharmacogenetic-assisted delay of onset clinical trial.

Study funding was supported by NIH R01 AG027161, R01 AG021155, P50 AG033514, UL1RR025011, RC1AG035635-01.

## References

- [1] Farrer LA, Cupples LA, Haines JL, Hyman B, Kukull WA, Mayeux R, et al. Effects of age, sex, and ethnicity on the association between apolipoprotein E genotype and Alzheimer disease. A meta-analysis. APOE and Alzheimer disease meta analysis consortium. *JAMA* 1997;278:1349–56.
- [2] Strittmatter WJ, Roses AD. Apolipoprotein E and Alzheimer's disease. *Annu Rev Neurosci* 1996;19:53–77.
- [3] Sleegers K, Lambert JC, Bertram L, Cruts M, Amouyel P, Van Broeckhoven C. The pursuit of susceptibility genes for Alzheimer's disease: progress and prospects. *Trends Genet* 2010;26:84–93.
- [4] Strittmatter WJ, Saunders AM, Schmechel D, Pericak-Vance M, Enghild J, Salvesen GS, Roses AD. Apolipoprotein E high-avidity binding to beta-amyloid and increased frequency of type 4 allele in late-onset familial Alzheimer disease. *Proc Natl Acad Sci U S A* 1993;90:1977–81.
- [5] Saunders AM, Strittmatter WJ, Schmechel D, George-Hyslop PH, Pericak-Vance MA, Joo SH, et al. Association of apolipoprotein E allele epsilon 4 with late-onset familial and sporadic Alzheimer's disease. *Neurology* 1993;43:1467–72.
- [6] van Duijn CM, de Knijff P, Cruts M, Wehnert A, Havekes LM, Hofman A, Van Broeckhoven C. Apolipoprotein E4 allele in a population-based study of early-onset Alzheimer's disease. *Nat Genet* 1994;7:74–8.
- [7] Slioter AJ, Cruts M, Kalmijn S, Hofman A, Breteler MM, Van Broeckhoven C, van Duijn CM. Risk estimates of dementia by apolipoprotein E genotypes from a population-based incidence study: the Rotterdam Study. *Arch Neurol* 1998;55:964–8.
- [8] Roses AD, Lutz MW, Amrine-Madsen H, Saunders AM, Crenshaw DG, Sundseth SS, Huentelman MJ, Welsh-Bohmer KA, Reiman EM. A TOMM40 variable-length polymorphism predicts the age of late-onset Alzheimer's disease. *Pharmacogenomics J* 2010;10:375–84.
- [9] Lutz MW, Crenshaw DG, Saunders AM, Roses AD. Genetic variation at a single locus and age of onset for Alzheimer's disease. *Alzheimers Dement* 2010;6:125–31.
- [10] Potkin SG, Guffanti G, Lakatos A, Turner JA, Kruggel F, Fallon JH, et al. Hippocampal atrophy as a quantitative trait in a genome-wide association study identifying novel susceptibility genes for Alzheimer's disease. *PLoS One* 2009;4:e6501.

- [11] Shen L, Kim S, Risacher SL, Nho K, Swaminathan S, West JD, et al. Whole genome association study of brain-wide imaging phenotypes for identifying quantitative trait loci in MCI and AD: a study of the ADNI cohort. *Neuroimage* 2010;53:1051–63.
- [12] Johnson SC, Ries ML, Hess TM, Carlsson CM, Gleason CE, Alexander AL, Rowley HA, Asthana S, Sager MA. Effect of Alzheimer disease risk on brain function during self-appraisal in healthy middle-aged adults. *Arch Gen Psychiatry* 2007;64:1163–71.
- [13] Xu G, McLaren DG, Ries ML, Fitzgerald ME, Bendlin BB, Rowley HA, et al. The influence of parental history of Alzheimer's disease and apolipoprotein E epsilon4 on the BOLD signal during recognition memory. *Brain* 2009;132:383–91.
- [14] Buckner RL, Snyder AZ, Shannon BJ, LaRossa G, Sachs R, Fotenos AF, et al. Molecular, structural, and functional characterization of Alzheimer's disease: evidence for a relationship between default activity, amyloid, and memory. *J Neurosci* 2005;25:7709–17.
- [15] Reiman EM, Caselli RJ, Yun LS, Chen K, Bandy D, Minoshima S, Thibodeau SN, Osborne D. Preclinical evidence of Alzheimer's disease in persons homozygous for the epsilon 4 allele for apolipoprotein E. *N Engl J Med* 1996;334:752–8.
- [16] Mosconi L, Brys M, Switalski R, Mistur R, Glodzik L, Pirraglia E, Tsui W, De Santi S, de Leon MJ. Maternal family history of Alzheimer's disease predisposes to reduced brain glucose metabolism. *Proc Natl Acad Sci U S A* 2007;104:19067–72.
- [17] Sager MA, Hermann B, La Rue A. Middle-aged children of persons with Alzheimer's disease: APOE genotypes and cognitive function in the Wisconsin registry for Alzheimer's prevention. *J Geriatr Psychiatry Neurol* 2005;18:245–9.
- [18] La Rue A, Hermann B, Jones JE, Johnson S, Asthana S, Sager MA. Effect of parental family history of Alzheimer's disease on serial position profiles. *Alzheimers Dement* 2008;4:285–90.
- [19] McKhann G, Drachman D, Folstein M, Katzman R, Price D, Stadlan EM. Clinical diagnosis of Alzheimer's disease: report of the NINCDS-ADRDA workgroup under the auspices of the Department of Health and Human Services Task Force on Alzheimer's disease. *Neurology* 1984;34:939–44.
- [20] Albert MS, Moss MB, Tanzi R, Jones K. Preclinical prediction of AD using neuropsychological tests. *J Int Neuropsychol Soc* 2001;7:631–9.
- [21] Cohen JD. Statistical power analysis for the behavioral sciences. 2nd ed. Hillsdale, NJ: Erlbaum; 1988.
- [22] Backman L, Jones S, Berger AK, Laukka EJ, Small BJ. Cognitive impairment in preclinical Alzheimer's disease: a meta-analysis. *Neuropsychology* 2005;19:520–31.
- [23] Elias MF, Beiser A, Wolf PA, Au R, White RF, D'Agostino RB. The preclinical phase of Alzheimer disease: a 22-year prospective study of the Framingham Cohort. *Arch Neurol* 2000;57:808–13.
- [24] Petersen RC, Smith G, Kokmen E, Ivnik RJ, Tangalos EG. Memory function in normal aging. *Neurology* 1992;42:396–401.
- [25] Bayley PJ, Salmon DP, Bondi MW, Bui BK, Olichney J, Delis DC, Thomas RG, Thal LJ. Comparison of the serial position effect in very mild Alzheimer's disease, mild Alzheimer's disease, and amnesia associated with electroconvulsive therapy. *J Int Neuropsychol Soc* 2000;6:290–8.
- [26] Bigler ED, Rosa L, Schultz F, Hall S, Harris J. Rey-Auditory verbal learning and the Rey-Osterrieth complex figure design performance in Alzheimer's disease and closed head injury. *J Clin Psychol* 1989;45:277–80.
- [27] Gainotti G, Marra C. Some aspects of memory disorders clearly distinguish dementia of the Alzheimer's type from depressive pseudo-dementia. *J Clin Exp Neuropsychol* 1994;16:65–78.
- [28] Dickerson BC, Feczko E, Augustinack JC, Pacheco J, Morris JC, Fischl B, Buckner RL. Differential effects of aging and Alzheimer's disease on medial temporal lobe cortical thickness and surface area. *Neurobiol Aging* 2009;30:432–40.
- [29] Jack CR, Petersen RC, Xu Y, O'Brien PC, Smith GE, Ivnik RJ, Boeve BF, Tangalos EG, Kokmen E. Rates of hippocampal atrophy correlate with change in clinical status in aging and AD. *Neurology* 2000;55:484–9.
- [30] DeToledo-Morrell L, Stoub TR, Bulgakova M, Wilson RS, Bennett DA, Leurgans S, Wu J, Turner DA. MRI-derived entorhinal volume is a good predictor of conversion from MCI to AD. *Neurobiol Aging* 2004;25:1197–203.
- [31] Vogt BA, Vogt L, Laureys S. Cytology and functionally correlated circuits of human posterior cingulate areas. *Neuroimage* 2006;29:452–66.
- [32] Chetelat G, Desgranges B, de la Sayette V, Viader F, Berkouk K, Landeau B, et al. Dissociating atrophy and hypometabolism impact on episodic memory in mild cognitive impairment. *Brain* 2003;126:1955–67.
- [33] Reiman EM, Chen K, Alexander GE, Caselli RJ, Bandy D, Osborne D, Saunders AM, Hardy J. Correlations between apolipoprotein E epsilon4 gene dose and brain-imaging measurements of regional hypometabolism. *Proc Natl Acad Sci U S A* 2005;102:8299–302.
- [34] Kempainen NM, Aalto S, Wilson IA, Någren K, Helin S, Brück A, et al. PET amyloid ligand [11C]PIB uptake is increased in mild cognitive impairment. *Neurology* 2007;68:1603–6.
- [35] Mosconi L, Rinne JO, Tsui WH, Berti V, Li Y, Wang H, Murray J, et al. Increased fibrillar amyloid- $\beta$  burden in normal individuals with a family history of late-onset Alzheimer's. *Proc Natl Acad Sci U S A* 2010;107:5949–54.
- [36] Rowe CC, Ng S, Ackermann U, Gong SJ, Pike K, Savage G, et al. Imaging beta-amyloid burden in aging and dementia. *Neurology* 2007;68:1718–25.
- [37] Johnson SC, Schmitz TW, Trivedi MA, Ries ML, Torgerson BM, Carlsson CM, Asthana S, Hermann BP, Sager MA. The influence of Alzheimer disease family history and apolipoprotein E epsilon4 on mesial temporal lobe activation. *J Neurosci* 2006;26:6069–76.
- [38] van Exel E, Eikelenboom P, Comijs H, Frölich M, Smit JH, Stek ML, Scheltens P, Eefsting JE, Westendorp RG. Vascular factors and markers of inflammation in offspring with a parental history of late-onset Alzheimer disease. *Arch Gen Psychiatry* 2009;66:1263–70.
- [39] van Vliet P, Westendorp RG, Eikelenboom P, Comijs HC, Frölich M, Bakker E, van der Flier W, van Exel E. Parental history of Alzheimer disease associated with lower plasma apolipoprotein E levels. *Neurology* 2009;73:681–7.
- [40] Caselli RJ, Reiman EM, Osborne D, Hentz JG, Baxter LC, Hernandez JL, Alexander GG. Longitudinal changes in cognition and behavior in asymptomatic carriers of the APOE e4 allele. *Neurology* 2004;62:1990–5.